

ANNUAL REPORT 2015

01.10.2014 – 30.09.2015



Creating the future together

The migration of health personnel from developing countries to the industrialised countries of the north is often promoted by active recruiting. This exodus of specialists is partly responsible for the fact that every year millions of people throughout the world do not receive the necessary medical treatment. Women's Hope International responds to this challenge by providing comprehensive training of midwives and deploying them in the field. Midwives make a vital contribution to the fight against maternal and child mortality and to the prevention of obstetric fistula.

In September 2015 the UN General Assembly approved the so-called Sustainable Development Goals. These replace the existing Millennium Development Goals, and set new standards for fighting global tragedies such as poverty, hunger and disease in the period up to 2030.

“Ensure healthy lives and promote well-being for all at all ages“ – is the text of the third goal, which applies in particular to mothers and children. This goal reflects the vision of Women's Hope International. For years we have been devoting our energy and conviction in favour of the well-being of mothers and children, particularly at the vulnerable time of pregnancy, childbirth and the postpartum period. Read in this annual report how this vision is taking shape in our four key countries, Afghanistan, Bangladesh, Ethiopia and Chad, in cooperation with our partners.

Thanks to the faithful commitment of volunteer helpers and because you, dear friends, support WHI with donations, we can shape the future together.



Dr. med. Martin Leimgruber
Chairman



Gerhard Bärtschi
CEO & Head of Programmes

WHO WE ARE

Women's Hope International (WHI) is a Swiss aid organisation committed to the improvement of maternal health in Africa and Asia. Girls and women are given professional support during pregnancy and childbirth. Preventive measures are taken to avoid birth trauma. Women with obstetric fistula receive treatment. Support is given to women and girls who are victims of social discrimination. Based on Christian ethics, we carry out our work in co-operation with our partners in a competent, professional, effective and efficient manner.

Our vision

Our aim is to achieve a situation in which:

- All women and girls afflicted with an obstetric fistula, who suffer physically and are outcast and despised, receive medical, social, psychological and pastoral care.
- No woman is obliged to give birth in inhuman and humiliating circumstances.
- No longer does a mother die every two minutes during childbirth, and maternal mortality worldwide is reduced to the low level of developed countries.
- Girls are not married off whilst still children, or by force.
- Sexuality is no longer misused in order to humiliate or oppress.
- Girls can go to school and not be prevented from doing so by a teenage pregnancy.
- Women can organize their relationships with confidence and on an equal footing.

Our values

- Our actions are based on fundamental and human rights, guided by Christian ethics.
- Our actions are based on respect for life and on taking a stand for the socially disadvantaged.
- We are particularly committed to social justice and equal rights for men and women.
- We are committed to helping all, irrespective of age, origin, language, religion, culture or socio-political convictions.

Our mission

The healing of obstetric fistula

The healing of women suffering from birth-related physical trauma

We are committed to the identification, treatment, rehabilitation and reintegration of women and girls suffering from obstetric fistula.

Safe deliveries

Competent care and maternity clinics

We help to provide competent care for girls and women during pregnancy, childbirth and the postnatal period. To achieve this we train midwives, build functional maternity clinics and ensure that emergency obstetric services are available.

Strong women

Empowerment of women

We promote and support the social status of women and make it possible for them to achieve independence and self-determination. Education on matters of reproductive health, including family planning, are part of this. We make every effort to prevent any future child marriages or teenage pregnancies.

What is an obstetric fistula?

An obstetric fistula is an abnormal opening between the vagina and the bladder or the rectum. The cause of this is prolonged or obstructed labour. The child cannot be delivered. Its head presses for hours on the surrounding tissue. In many cases the mother's pelvic tissue breaks down, leaving a hole or fistula between adjacent organs. As consequence, urine and stools leaks out through the vagina uncontrollably. This incontinence renders it impossible for the person to lead a normal life. Such women are frequently shunned, divorced or become social outcasts. As the cause is the lack of pre-natal and obstetric care and the young age of the mothers-to-be, this condition only occurs in developing countries. Across the world, two million girls and women suffer from an obstetric fistula. Between 50,000 and 100,000 new cases of obstetric fistulas occur each year.



International work

How we work

Through prevention, the combating of causes and a holistic approach to the treatment of women who are already suffering from birth-related physical trauma, WHI combats the problem of obstetric fistula in an integrated manner. We focus on girls and women who for socio-economic and cultural reasons, and because of inadequate access to appropriate health care, are in danger of dying during or after giving birth, or of developing an obstetric fistula.

The long-term goal is to achieve a marked reduction in maternal mortality and eliminate obstetric fistula. The aim is also for girls and women to achieve self-determination and gain respect and esteem in all areas of life.

In implementing our projects in Afghanistan, Bangladesh, Ethiopia and Chad we act according to the following principles:

- We carry out our mission in a professionally competent, effective and efficient manner.
- We work together with civil and state partners who implement our programmes.
- We work together as partners in pursuit of the same goals; we give long-term support to our partners and help them achieve a greater degree of professional competence.
- Our programmes are innovative and sustainable. Where possible, they are coordinated with the state health system.
- In each of our countries of operation, we work towards a country programme approach with geographical and thematic foci with the necessary structures for coordination and direction.
- We test our projects and programmes according to the following criteria: relevance, efficiency, effectiveness, sustainability and impact.

Programme Review Committee

A committee of outside experts meets periodically to give their opinion on new projects for the attention of the Board, either recommending them or turning them down. The exchanges between WHI staff and the experts working on concrete projects also serves the interests of internal knowledge management.

The following persons are members of the committee:

- Dr. Alexander Bischoff, Institute of Nursing Science, Basel University
- Dr. Susanna Hausmann-Muela, Partners for Applied Social Sciences (PASS)
- Dr. Kate Molesworth, Swiss Tropical and Public Health Institute
- Helena Zweifel, Managing Director of Medicus Mundi Schweiz

Where we work: Overview of partners and projects

Afghanistan		
<i>Partner</i>	<i>Project</i>	<i>Remitted to partners in CHF</i>
CURE International Hospital	Prevention and treatment of physical birth trauma	104,748
Première Urgence Internationale	Basic midwife training	50,107
Bangladesh		
<i>Partner</i>	<i>Project</i>	<i>Remitted to partners in CHF</i>
Lutheran Aid Medicine in Bangladesh (LAMB)	Basic reproductive health and holistic treatment of women with obstetric fistula	234,848
Chad		
<i>Partner</i>	<i>Project</i>	<i>Remitted to partners in CHF</i>
Projet Souffrance	Projet Souffrance – Treatment of obstetric fistula	44,587
Ethiopia		
<i>Partner</i>	<i>Project</i>	<i>Remitted to partners in CHF</i>
Attat Catholic Hospital	House for at Risk Mothers	66,401
CUAMM	Health for mother and child	60,000
Hamlin Fistula Ethiopia	Midwife training	66,182
	Strengthening of maternal health services	21,058
St. Luke Catholic Hospital	Midwife training	43,485
	House for at Risk Mothers	59,769
Women and Health Alliance (WAHA)	Support for the treatment of obstetric fistula	19,119

Key figures for the year 2014/2015

(October 2014 until September 2015)

Cooperation with various partner organisations enabled WHI to achieve a great deal on site. The following summary figures show the results of the programme's work in the most important core areas for the year under review.

- Number of fistula operations carried out: **351**
- Number of midwife students receiving financial support: **97**
- Number of professionally assisted women with high-risk pregnancies: **1,064**
- Number of health centres/maternity clinics under construction supported: **23**

International work: Afghanistan

In Afghanistan WHI has been working with CURE International Hospital since 2007, and with Première Urgence Internationale since 2014.

Partner organisation: CURE International Hospital

CURE International Hospital began working in Kabul in 2005. This training hospital has a staff of over 300, of whom 37 are doctors. The hospital has 104 beds, with an outpatient clinic and departments for surgery, gynaecology/obstetrics, and paediatric medicine.

Project with CURE International: Prevention and treatment of physical birth trauma

In the year under review WHI has been supporting the project “Treating & Preventing Birth Trauma“. The project has two goals. Firstly, building awareness of the fistula problem among government health staff in the provinces, as well as identification and treatment of patients with obstetric fistula. Secondly: the guarantee of a high quality obstetrics service and gynaecological care at the hospital. A component of the project is also the further training of male and female Afghan doctors. The project is supported jointly with the Fistula Foundation.

What was achieved?

In spite of the aggravated security situation, a lot has been achieved in this project. Between October 2014 and September 2015 CURE, in cooperation with WHI, attained the following objectives:

- In the year under review, 118 fistula operations were performed in the hospital. As many complex cases were transferred into the CURE hospital, the success rate was only 78%.
- Six doctors completed their further training as assistant doctors in the areas of fistula surgery, obstetrics and gynaecology.
- Four provinces were visited by the mobilisation team. About 1,120 members of the health staff were made aware of the fistula problem.

Total annual amount of the project:	CHF 806,677
WHI contribution to the project in the year under review	CHF 104,748

Partner organisation: Première Urgence Internationale

Première Urgence Internationale is a French relief organisation that has been active in the health area in Afghanistan since 1980. Since 2003 the organisation has had a mandate from the Afghan Health Ministry in the provinces of Kunar and Daykundi, and is responsible for six hospitals and 68 health centres. 1,100 Afghan employees work in both provinces for the implementation of the projects.

Project with PUI: Basic midwife training

The newly developed project is being run in Kunar, one of the provinces most affected by security problems. The training of 30 midwives and 31 nurses strengthens the national health system and covers the need for qualified health staff. The training includes three phases of eight months each.

The total duration of the project, which started in April 2014, is 28 months. Apart from the Afghan Government, the SDC (Swiss Development and Cooperation) is also contributing to funding the project.

What was achieved?

In the year under review, Première Urgence Internationale achieved, in cooperation with WHI, the following results:

- From 16 September 2014 to 23 April 2015 the first phase in the training of 30 midwives and 31 nurses was implemented in a new school building with an accommodation unit. 15 modules were taught.
- The second phase of the training began on 10 May 2015 and will last until January 2016.

Total annual amount of the project:	CHF 277,896
WHI contribution to the project in the year under review	CHF 50,107



International Work: Bangladesh

WHI has been working in Bangladesh since 2012 with LAMB.

Partner organisation: LAMB

LAMB (Lutheran Aid Medicine in Bangladesh) has been active since 1955 in the north-west of Bangladesh, in the vicinity of the district capital Dinajpur. In addition to various basic health programmes which cover a catchment area of about two million people, LAMB also runs a hospital, a training centre, a comprehensive school and a research centre. The hospital has 150 beds. In 2013, LAMB had a total staff of 949.

Project with LAMB: Basic reproductive health and holistic treatment of women with obstetric fistula

The project objective is increased resilience and improved health and resources for mothers and children in ten areas of the Parpatipur sub-district. The project, begun in July 2014 and being run for 3.5 years, is characterised by a holistic approach. Apart from the identification, treatment and rehabilitation of women with obstetric fistula it focuses on reactivating government health centres including the construction of eleven maternity clinics. Essential components of the projects are the forming of women’s groups, the treatment and rehabilitation of handicapped children and a comprehensive campaign among young people on sexual health and the dangers and risks of child marriages.

What was achieved?

In cooperation with WHI, LAMB achieved the following results in the year under review:

- 109 women with obstetric fistula were operated on.
- Recruitment of 20 women who completed their 6-month training as Community Skilled Birth -- Attendants and then took up their work in five maternity clinics.
- A basic study was carried out in five districts.
- Five maternity clinics were renovated and equipped with the necessary instruments.
- In five districts, 300 women’s groups of 20 members each were formed, and these now meet regularly.
- In 10 schools, 4,629 young people received information on reproductive and sexual health as well as on the dangers and risks of child marriages.

Total amount of the project:	CHF 234,848
WHI contribution to the project in the year under review	CHF 234,848

International Work: Chad

In Chad WHI works together with Projet Souffrance.

Partner organisation: Projet Souffrance

Projet Souffrance is a recent initiative of staff of the government hospital in Abéché in the northeast of Chad. The organisation’s main concern is the elimination of suffering of women with obstetric fistula.

Project with Projet Souffrance: Support in the treatment of obstetric fistula

The project focuses on the treatment of women with obstetric fistula. This includes pre- and post-operative care. The most undernourished women receive a corresponding boost of nourishment as preparation for the operation. A good general state of health helps them to better withstand the surgery and promotes their recovery.

What was achieved?

In the year under review, Projet Souffrance, together with WHI, achieved the following results:

- 88 women with obstetric fistula were operated on and received pre-and post-operative care.

Total amount of the project:	CHF 44,587
WHI contribution to the project in the year under review	CHF 44,587



International work: Ethiopia

In Ethiopia WHI works with five partner organisations.

Partner organisation: Attat Catholic Hospital

The Attat Catholic Hospital is located near Welkite, about 175 kilometres south-west of Addis Ababa. The hospital was founded in 1969 by the Order of the Medical Missionary Sisters. Since then, sisters of the Order have been active in managing the hospital. The 65-bed establishment runs an outpatients service and has departments for internal medicine, surgery, paediatrics as well as a h. The hospital is involved in 9 agricultural cooperatives through a basic health programme. A total staff of 200 work in the different hospital departments. In addition, many future doctors, health officers and midwives complete their work placement period in Attat.

Project with Attat Catholic Hospital: House for at Risk Mothers

The goal of the current project is the reduction of maternal and infant mortality in the region. Women with high-risk pregnancies are transferred from neighbouring health centres to the house for at risk mothers located on the premises of the Attat Catholic Hospital. High-risk pregnancies mostly concern girls and women from remote villages where there is no possibility of professional obstetric care. The average length of stay in the observation unit is two to three weeks before the baby is due. This ensures that the expectant mothers are cared for at the time of birth by medical professionals, and that if necessary a caesarean section can be performed. WHI covers the costs of obstetric care for all women with high-risk pregnancies.

What was achieved?

In the year under review the Attat Hospital achieved the following results in cooperation with WHI:

- 781 women with high-risk pregnancies were transferred to the house for at risk mothers and gave birth to a healthy child. Of these 294 were born through caesarean section.

Total amount of the project:	CHF 66,401
WHI contribution to the project in the year under review:	CHF 66,401

Partner organisation: CUAMM

CUAMM Ethiopia is the local Ethiopian branch of an Italian aid organisation called CUAMM Doctors for Africa. CUAMM's activity focuses on the sustainable improvement and safeguarding of the health of Ethiopia's population. The organisation has been working in the country in the health field since 1981 and played a significant part in the construction of St. Luke's Hospital in Woliso. WHI began its cooperation with CUAMM in May 2015.

Project with CUAMM: Health for mothers and children

The project contributes to the reduction of maternal and child mortality in three districts around Woliso. Its goal is better access for mothers and their children to government health services. They should be

able to take better advantage of the state health services, and the high quality of the latter should encourage them. Implementation of the project takes place in close cooperation with the government health service on district level.

What was achieved?

Between May and September 2015 CUAMM achieved the following results together with WHI:

- A stocktaking was carried out on the infrastructure and equipment of 18 health centres.
- 18 health centres were renovated and equipped with the necessary instruments.
- Further training courses on maternal health were run for 60 staff in the health centres.

Total amount of the project:	CHF 159,825
WHI contribution to the project in the year under review:	CHF 60,000

Partner organisation: Hamlin Fistula Ethiopia

Hamlin Fistula Ethiopia in Addis Ababa is a world-famous competence centre for the treatment of women with obstetric fistula, founded in 1974 by the doctor couple Drs Reginald and Catherine Hamlin. Hamlin Fistula Ethiopia employs a total staff of 550. In addition to the hospital for obstetric injuries in Addis Ababa, the organisation runs five external centres in different parts of the country. Furthermore, Hamlin Fistula Ethiopia runs a midwife school.

Project 1 with Hamlin Fistula Ethiopia: Midwife training

The goal of this project is the training of midwives in a 4-year programme for a Bachelor's degree. A total of 90 midwife students are enrolled in the school. The training is free of charge for the students, but they must undertake to work as midwives in rural areas in Ethiopia for three years after completing their training. During the theoretical instruction period, the students live in a hostel on the school grounds. Each student is obliged to handle at least 40 births by the end of her training in the various internships. WHI is supporting the study and living costs of 17 of the 87 midwife students until 2017.

What was achieved?

In the year under review, Hamlin Fistula Ethiopia achieved, together with WHI, the following results:

- 87 midwife students successfully completed the school year (3 dropped out).
- 24 midwife students completed their training successfully by obtaining a Bachelor's degree.

Total annual amount of the project:	CHF 357,044
WHI contribution to the project in the year under review	CHF 66,182

Project 2 with Hamlin Fistula Ethiopia: Strengthening of maternal health services

The goal of the project is the improvement of access by expectant mothers to adequate health services in their area. The project focuses on 17 of the government-run health centres in five regions of the country (Amhara, Tigray, Southern Nations, East and West Oromia). The project's particular contribution is the engagement of the well-trained midwives in the 17 health centres mentioned. Two midwives work together in each health centre. They continue to be supported professionally by Hamlin

Fistula Ethiopia, through a wage bonus and a subsidy for medicines. All 17 health centres are located in remote locations. The maintenance and operation of ambulance vehicles used for the transfer of emergency cases to the nearest large hospital are also part of the project. WHI funds the support of Hamlin Fistula Ethiopia for 2 of the 17 health centres.

What was achieved?

In the year under review Hamlin Fistula Ethiopia achieved, together with WHI, the following results in the 17 health centres:

- 9,413 babies were born.
- 12,976 preventive examinations during pregnancy were performed.
- 14,582 postnatal examinations were performed.
- 47,801 family planning consultations were carried out.

Total annual amount of the project:	CHF 225,314
WHI contribution to the project in the year under review	CHF 21,058

Partner organisation: St. Luke Catholic Hospital

St. Luke Catholic Hospital is a Catholic missionary hospital in Woliso, about 120 kilometres south-west of Addis Ababa. The hospital has a midwife school as well as a basic health programme in the catchment area. It runs an outpatient service and has departments for internal medicine, surgery, paediatrics, ophthalmology as well as an obstetrics and gynaecology department with a total of 200 beds. A staff of 369 work in the hospital.

Project 1 with St. Luke Catholic Hospital: House for at Risk Mothers

The goal of the present project is the reduction of maternal and infant mortality in the region. Women with high-risk pregnancies who have been identified through the preventive examinations in the St. Luke Hospital can live in a special house located on the hospital grounds, until they give birth. This mostly concerns girls and women from outlying villages, where there is no possibility of professionally accompanied birth. The stay of two or three weeks before the baby is due ensures that the pregnant women are cared for by medical professionals, and that a caesarean section can be performed if necessary.

What was achieved?

In the year under review the St. Luke Hospital, together with WHI, achieved the following results:

- 283 women with high-risk pregnancies were admitted to the house for at risk mothers and gave birth to healthy children. Of these 86 were born by caesarean section.

Total annual amount of the project:	CHF 59,769
WHI contribution to the project in the year under review	CHF 59,769

Project 2 with St. Luke Catholic Hospital: Midwifery training

This project aims to ensure the professional care of women during pregnancy, at birth and in the postnatal period, and thus to reduce maternal and infant mortality in the region. This is achieved through the training of currently 79 midwives in a 3-year course. The midwife students live in a hostel on the hospital grounds near the school. After the training, the midwives are employed in various, mostly private, health facilities in the region. The training is free of charge and includes the accommodation. In return, the graduates undertake to work for at least three years in a medical facility in Ethiopia. In the year under review, WHI covered the study and living costs of 35 of the 79 midwife students.

What was achieved?

In the year under review, the St. Luke Hospital achieved, together with WHI, the following results:

- 79 midwife students underwent training in the midwife school. In the first study year there were 25 students, in the second 40 and in the third 14.
- 14 midwife students successfully completed their training after three years, and are now working in a health institution in the region.

Total annual amount of the project:	CHF 97,122
WHI contribution to the project in the year under review	CHF 43,485

Partner organisation: Women and Health Alliance (WAHA)

Women and Health Alliance (WAHA) is an international aid organisation based in Paris. In 2009, Ethiopian medical specialists created a branch of WAHA in Ethiopia. Currently WAHA is running fistula treatment centres in Gondar, Jimma and Assela in Ethiopia. These centres cooperate closely with the gynaecology and obstetrics departments in the respective government university hospitals. Apart from treatment and care of patients with obstetric fistula, an important part of WAHA's work is the training of medical students in fistula surgery. WHI has been working with WAHA since June 2015 in the Fistula Centre of the University Hospital in Jimma.

Project with WAHA: Support in the treatment of obstetric fistula

The goal of this project is the treatment of women with obstetric fistula. This includes accompanying the patients before and after the operation as well as covering the costs of transport to the hospital. The project is run in close cooperation with the Jimma University Hospital.

What was achieved?

Between June and September 2015 WAHA achieved, together with WHI, the following results:

- 36 women with obstetric fistula were operated on and taken care of psychologically.

Total amount of the project:	CHF 19,119
WHI contribution to the project in the year under review:	CHF 19,119

National work

Awareness-raising work

Apart from project work, WHI is concerned with informing and raising the awareness of people with respect to the situation of girls and women in the countries in which it is active. WHI wishes to encourage people to take a closer look and act in a committed manner. The need for action remains great: over two million girls and women worldwide still suffer from obstetric fistula, many women do not receive professional care during pregnancy, childbirth and the postpartum period, and girls are forced into marriage while still children or teenagers.

Presentations and meetings

At five events speakers reported on the project work and the causes for which Women's Hope International campaigns. As an example, in Sarnen the Swiss gynaecologist Dr. Beatrice Ambauen reported on the fistula project she leads, a project of WHI partner organisation LAMB in Bangladesh. An audience of 100 listened attentively to her lecture, which took place in November in the Obwalden Cantonal Hospital.

Campaign week on obstetric fistula

Together with the health faculty of the Berne University of Applied Sciences WHI organised a campaign week on the subject of fistula. Students in the study courses on obstetrics, nursing, nutrition and physiotherapy as well as other interested members of the audience heard Claudia Leimgruber, founder of WHI and a self-employed midwife, describe how obstetric fistula arise and how the women affected are cared for and treated. In addition, during the campaign week there was a public screening of the film "A Walk to Beautiful", and a specially designed infographic on the situation of women with obstetric fistula was successfully disseminated via the social media.

Frauenlauf (Women's Run)

On 14 June, twelve women from different corners of Switzerland made their way to the Frauenlauf in Berne. They ran in the greatest Swiss sporting event for women and in so doing raised donations for WHI projects. The amounts collected totalled 4,200 francs and enabled women suffering from obstetric fistula to be healed, and thus begin a completely new life. We welcome this encouraging result, and our thanks go to all participants.

Communication

Women's Hope International regularly informs donors and interested parties on the progress of projects, and provides background knowledge on sexual and reproductive health. To this end the organisation published four editions of the magazine 'WHI News', sent out seven e-mail newsletters and provided information through Facebook. Subscriptions to the magazine and the e-mail newsletter can be obtained via the secretariat. WHI also welcomes new fans on facebook and twitter.

Involvement of volunteers

Without the assistance of many people who make a commitment on the operational or strategic level, WHI would not be able to act on the scale it does today. Volunteers devote their know-how and energy to helping out in a variety of areas. These include:

- Finance, accounting, recording of donation data
- Assistance with publications, writing, layout, despatch
- Lectures and assistance in street campaigns
- Programming work
- Organisation of events
- Work on the Board

Over 779 hours were spent on volunteer work - the equivalent of about 95 workdays. Other people carried out their own campaigns and spread information on WHI on occasions such as birthdays, wedding anniversaries or the birth of their children, soliciting donations for the projects.

WHI sincerely thanks all who have invested their time to improve the lot of girls and women in the developing countries of the South on a sustainable basis.



BALANCE SHEET PER 30 SEPTEMBRE 2015

	30.09.2015		30.09.2014	
	CHF	%	CHF	%
ASSETS				
Accounts in CHF	321,133.70	78.0%	369,395.28	84.9%
Accounts in EUR	39,626.88	9.6%	39,874.80	9.2%
Accounts in USD	10,086.35	2.5%	9,916.40	2.3%
Total liquid funds	370,846.93	90.1%	419,186.48	96.4%
Receivables	90.08	0.0%	90.08	0.0%
Prepaid expenses	27,173.60	6.6%	500.00	0.1%
WORKING CAPITAL	398,110.61	96.7%	419,776.56	96.5%
Movable assets	13,534.00	3.3%	15,065.00	3.5%
FIXED ASSETS	13,534.00	3.3%	15,065.00	3.5%
TOTAL ASSETS	411,644.61	100.0%	434,841.56	100.0%
LIABILITIES				
Accounts payable from supplies/services	3,384.10	0.8%	16,774.55	3.9%
Accrued expenses	7,952.10	1.9%	51,280.74	11.8%
CURRENT LIABILITIES	11,336.20	2.8%	68,055.29	15.7%
Fund Ethiopia	116,103.90	28.2%	-	0.0%
Fund Chad	-	0.0%	-	0.0%
Fund Afghanistan	-	0.0%	-	0.0%
Fund Bangladesh	215,359.40	52.3%	248,025.45	57.0%
Thematic funds	250.00	0.1%	-	0.0%
TIED FUND CAPITAL	331,713.30	80.6%	248,025.45	57.0%
Acquired free capital	118,760.82	28.9%	150,000.00	34.5%
Annual result	-50,165.71	-12.2%	-31,239.18	-7.2%
TOTAL ORGANISATION CAPITAL	68,595.11	16.7%	118,760.82	27.3%
LIABILITIES	411,644.61	100.0%	434,841.56	100.0%

Profit and Loss Account 1.10.2014 - 30.9. 2015

	1.10.2014 - 30.9.2015		10.2013 - 30.09.2014	
	CHF	%	CHF	%
REVENUE				
Donations from natural persons	302,446.03	29.8%	339,596.88	42.1%
Donations from legal person	349,190.00	34.5%	160,600.00	19.9%
Contributions from church funds	76,217.69	7.5%	66,475.35	8.2%
Contributions from public funds	271,366.00	26.8%	212,560.00	26.4%
Total donations	999,219.72	98.6%	779,232.23	96.7%
<i>thereof earmarked donations</i>	<i>571,749.35</i>	<i>56.4%</i>	<i>491,551.10</i>	<i>61.0%</i>
Other revenues	14,188.16	1.4%	26,845.58	3.3%
TOTAL REVENUES	1,013,407.88	100.0%	806,077.81	100.0%
EXPENDITURE				
Projects abroad	734,701.65	72.5%	511,853.60	63.5%
Staff and material expenditure abroad	71,832.58	7.1%	79,201.85	9.8%
Total abroad	806,534.23	79.6%	591,055.45	73.3%
Communication & awareness-raising	24,706.32	2.4%	39,275.92	4.9%
Staff and material expenditure C & A	34,817.83	3.4%	25,668.55	3.2%
Total communication & awareness-raising	59,524.15	5.9%	64,944.47	8.1%
Events & campaigns	3,170.33	0.3%	7,401.30	0.9%
Staff and material expenditure fundraising	41,772.63	4.1%	20,668.55	2.6%
Total fundraising	44,942.96	4.4%	28,069.85	3.5%
Sales & miscellaneous	57.34	0.0%	-	0.0%
Staff and material expenditure administration	64,759.73	6.4%	21,831.49	2.7%
Total administrative expenditure	64,817.07	6.4%	21,831.49	2.7%
Interim result 1	37,589.47		100,176.55	
Financial income	345.85	0.0%	932.90	0.1%
Financial expenditure	-4,413.18	-0.4%	-1,728.04	-0.2%
Annual result before fund result	33,522.14		99,381.41	
Allocation of earmarked funds	-571,749.35	-56.4%	-491,551.10	-61.0%
Withdrawal of earmarked funds	734,701.65	72.5%	511,853.60	63.5%
Internal transfer of earmarked funds	-246,640.15	-24.3%	-151,259.14	-18.8%
Fund result	-83,687.85	-8.3%	-130,956.64	-16.2%
Annual result before change in organisation capital	-50,165.71		-31,239.18	
Withdrawal of organisation capital	50,165.71		31,239.18	
Total change in organisation capital	50,165.71	5.0%	31,239.18	3.9%
Annual result after allocations	0.00		0.00	

BALANCE SHEET PER 30 SEPTEMBRE 2015

Contributions in CHF	Opening balance	Allocation (external)	Utilisation (external)	Internal fund transfers	Closing balance
Afghanistan overall	-	-	-72.00	72.00	-
Obstetric fistula care	-	-	-56,074.20	56,074.20	-
Midwifery school	-	44,978.60	-50,107.20	5,128.60	-
Funds Afghanistan	-	44,978.60	-106,253.40	61,274.80	-
Bangladesh overall	-	-	-2,085.50	2,085.50	-
Reproductive health services	248,025.45	205,007.25	-237,673.30	-	215,359.40
Funds Bangladesh	248,025.45	205,007.25	-239,758.80	2,085.50	215,359.40
Chad overall	-	-	-3,195.15	3,195.15	-
National coordination office	-	-	-2,028.60	2,028.60	-
Project Souffrance	-	17,000.00	-44,587.40	27,587.40	-
Funds Chad	-	17,000.00	-49,811.15	32,811.15	-
Ethiopia overall	-	-	-2,108.00	2,108.00	-
National coordination office	-	-	-756.00	756.00	-
Obstetric fistula care	-	-	-19,119.35	19,119.35	-
Midwifery school Hamlin	-	3,400.00	-66,181.82	62,781.82	-
Midwifery school St.Luke	-	510.00	-43,484.60	42,974.60	-
House for at risk mothers St.Luke	-	-	-59,769.00	59,769.00	-
House for at risk mothers Attat	-	-	-66,401.50	66,401.50	-
Maternal health services	-	-	-21,056.03	21,058.03	-
Mother and child health	-	278,757.50	-60,000.00	-102,653.60	116,103.90
Funds Ethiopia	-	282,667.50	-338,878.30	172,314.70	116,103.90
Funds operations	-	21,846.00	-	-21,846.00	-
Funds strong girls and women	-	250.00	-	-	250.00
Thematic funds	-	22,096.00	-	-21,846.00	250.00
Fund capital earmarked	248,025.45	248,025.45	-734,701.65	246,640.15	331,713.30
Acquired free capital	118,760.82	-	-	-50,165.71	68,595.11
Annual result	-	-50,165.71	-	50,165.71	-
Organisation capital	118,760.82	-50,165.71	-	-	68,595.11

Appendix to financial statements 2014/2015

Accounting principles

The present financial statements were established in compliance with the accounting recommendations Swiss GAAP FER (Kern-FER und FER 21), and respect the Swiss Code of Obligations and the provisions in the statutes.

The financial statements provide a picture of the financial and earnings situation of Women's Hope International that correspond to the actual circumstances.

Materiality and valuation base as well as explanatory details on the balance sheet

The accounts are reported in Swiss francs. Assets in foreign currencies are converted at the exchange rate valid on the balance sheet reporting date, transactions generally at the respective daily exchange rate. The principle of individual evaluation of assets and liabilities applies.

Liquid assets

This position contains post and bank accounts, and is evaluated at nominal value; foreign currencies at the period-end exchange rate per:

Currency	30.09.2015	30.09.2014
EURO	1.09	1.21
USD	0.97	0.96

Receivables

This position contains the credit from withholding tax. The evaluation of this position is made at nominal value.

Fixed assets

This position covers office equipment such as IT hardware and software. The valuation is made on the basis of acquisition costs less depreciation. The equipment is depreciated in linear fashion, within 3 years. The minimum capitalisation level is CHF 1,000.-.

	Opening balance	Inflows	Outflows	Reclassification	Closing balance
Acquisition values					
Movable assets	22,596.70	9,000.00	0.00	0.00	31,596.70
Total	22,596.70	9,000.00	0.00	0.00	31,596.70
Provision for depreciation					
Movable assets	7,531.70	10,531.00	0.00	0.00	18,062.70
Total	7,531.70	10,531.00	0.00	0.00	18,062.70
Net book value	15,065.00	1,531.00	0.00	0.00	13,534.00

Liabilities from supplies/services

This balance sheet position covers current payables for supplies and services. The accounting is at nominal value.

Deferred income

This position contains the accruals of material and social security expenditures.

Fund capital

This position covers funds from donations in which the intended purpose is limited by the donors and the public authorities. The modifications can be seen under Change in Fund Capital in the Operating Statement as well as in the Statement on the Change in Capital. Internal transfers for underfinanced projects were made from thematic funds with a similar purpose, as well as through a reasonable withdrawal from donations.

Organisation capital

This position covers exclusively acquired free capital. See also the Statement on the Change in Capital.

Details on the Profit and Loss Account

Contributions from public funds

This position contains: Swiss Development and Cooperation (SDC) CHF 49,416.- (previous year CHF 71,560.-), Cantons CHF 217,000.- (previous year CHF 98,000.-) and local communities CHF 4,950.- (previous year CHF 43,000.-).

Cost split per category

	Direct costs	Staff expenditure	Material expenditure	Depreciation	Total
Projects abroad	735,793	64,893	4,218	1,631	806,534
Communication & Awareness-raising	24,449	30,767	3,490	819	59,524
Fundraising	4,335	31,616	8,172	819	44,943
Administration	9,426	28,873	19,255	7,263	64,817
Total	774,003	156,150	35,135	10,531	975,818

Voluntary work performed

A total of over 779 hours were spent in volunteer work. This corresponds to about 95 working days.

Management bodies

All members of the Board work on a voluntary basis and receive no attendance fees.

Staff pension arrangements

Employees of Women's Hope International are insured in the framework of an affiliation agreement with the Gemeinschaftsstiftung (joint foundation) 21 Plus, Basel, covering the economic consequences of old age, disability and death. This is a contributory plan whereby both employer and employee pay fixed contributions. At the balance sheet closing date no additional benefit or obligations accrue to Women's Hope International as a result of this affiliation agreement.

Details on cash flow analysis

As per Swiss GAAP FER a cash flow statement or analysis is not required for small¹ non-profit organisations (FER 21/27).

The financial statement has been audited by KPB Treuhand AG, Köniz.

¹ If two of the following criteria are not met at two consecutive balance sheet closing dates: balance sheet amount of CHF 2 million., free gifts and contributions from public funds CHF 1 million, an average of 10 full-time paid positions over the year.

Performance Report 2015

For the organisation's effectiveness, we refer readers to the comprehensive information in the first section of the annual report.

Women's Hope International

Legal form: Association

Founded: 4 December 2003, Berne

Purpose of the Association (our mission according to the association's statutes)

Women's Hope International is an aid organisation working for the improvement of sexual and reproductive health in Africa and Asia.

The Association is active in the identification, treatment, rehabilitation and reintegration of women and girls with obstetric injuries.

The Association supports competent accompaniment of women and girls during pregnancy, childbirth and the postnatal period.

In addition, the Association encourages and strengthens women and girls in their social status, enables their independence and self-determination, especially regarding their sexual and reproductive health.

Help is provided irrespective of age, origin, language, religion, culture or political conviction.

The Association carries out its activity on a non-profit basis. No economic purpose or financial gain is pursued.

Assembly of Members

The Assembly of Members has supervisory authority over the Association's operations. It is responsible for the election and discharge of the Board as well as for acceptance of the organisation's activity report, financial statements and auditor's report.

Auditors

Auditing the financial statements has been entrusted to the company KPB Treuhand AG.

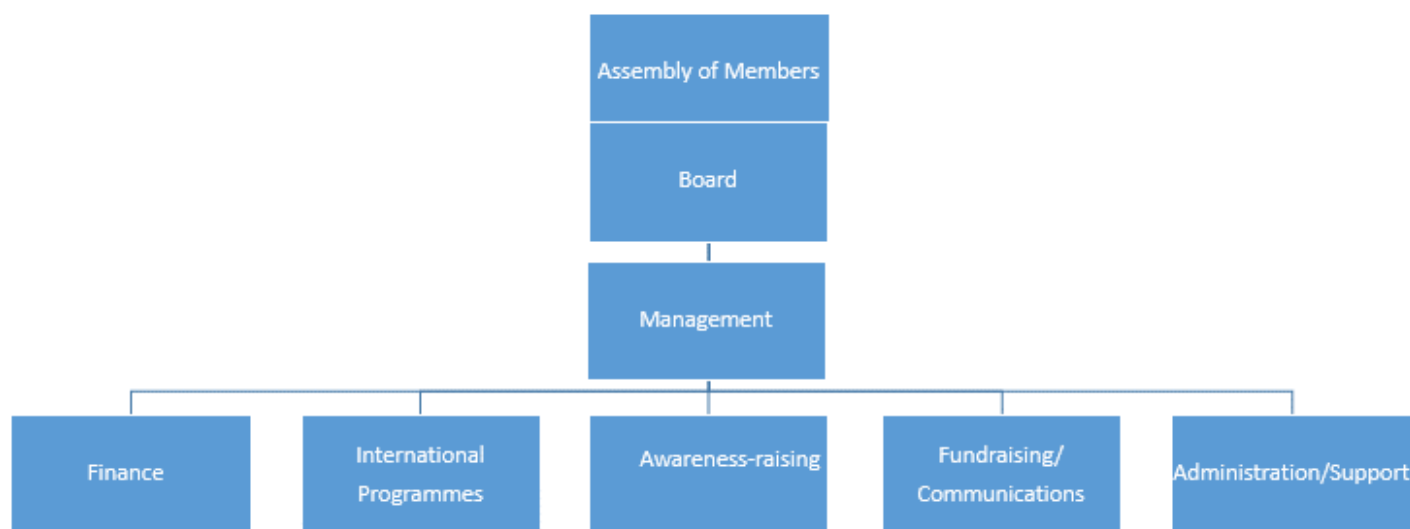
Board

The Board of WHI consisted of six persons in the year under report. The Board is responsible for the strategic management of the organisation and has supervision over the management. In the last year the Board met for six sessions as well as for a Board retreat to discuss the orientation of the organisation. The members of the WHI Board work on a voluntary basis. They receive no compensation or attendance fees.

- **Dr. Martin Leimgruber**, Chairman, FMH Consultant for Surgery and General Medicine, Bellach
- **Dr. Dorothea Hefti-Fliegenschnee**, Vice-Chairman, FMH Consultant in Gynaecology and Obstetrics, Langenthal
- **Matthias Lüscher**, Secretary, Public Relations Manager, lic. phil. hist., Berne
- **Madeleine Bolliger**, Ethnologist, Basel
- **Manuela Bracale**, responsible for Finance and Business Development, Wilen
- **Pierre Fivaz**, lawyer and notary, Niederbipp/SO

Secretariat

Gerhard Bärtschi has been CEO of Women's Hope International since 1 January 2013. Within the Board, the CEO has the right to consultation and petition, but not the right to vote. In this way, the distinction between the strategic and operational level is preserved. In addition to his general management function, Gerhard Bärtschi as Head of Programmes is responsible for managing the area of International Programmes. Léonie Reichenecker also works in the secretariat as Manager for the Fundraising and Communications area. Two volunteers are responsible for Finance and Accounting. Paid staff working at the secretariat part-time add up to a total of 130 per cent. In addition, during the year under review a trainee worked full-time in the secretariat for seven months.



Memberships

WHI is a member of the following networks and organisations:

- Medicus Mundi Schweiz
- Campaign to End Fistula, UNFPA
- International Obstetric Fistula Working Group (IOFWG)

Sincere thanks!

Under the motto “Strong women – Safe births – Healing fistula” Women's Hope International is dedicated to improving the health situation of women and girls in developing countries and strengthening their position in society. We are very happy that so many different people and institutions have joined us in our commitment to reach these goals.

WHI sincerely thanks all those who have contributed over the past year to implementing the projects in favour of women, children and families in Afghanistan, Bangladesh, Ethiopia and Chad. In particular, our thanks go to:

- Our donors, for their commitment
- All foundations, parishes and companies for their generous support
- The cantons and political communities for their project contributions
- Our volunteer helpers for their sterling work and great dedication
- All who have helped make others aware of the challenges we face



Women's Hope International
Sulgenbachstrasse 51
3007 Berne, Switzerland
Tel: +41 (0)31 991 55 56



www.womenshope.ch
info@womenshope.ch
Bank account: 60-522618-6
IBAN: CH77 0900 0000 6052 2618 6

Donations Account Germany/EU
Women's Hope International
IBAN: DE72 6905 0001 0024 2557 21
BIC: SOLADES1KNZ
Sparkasse Bodensee



Imprint:

Publisher: Women's Hope International (WHI) **Editors:** Gerhard Bärtschi, Martin Leimgruber, Léonie Reichenecker

Picture credits: All pictures Women's Hope International **Copyright:** Reproduction of articles and pictures only with prior permission.